



Sound and District Primary School



Meet the teacher
Reception meeting for parents and carers
September 2018

Meet The Teachers

▶ Class Teacher

Mrs Styles

▶ Teaching Assistant

Mrs Huntbach

Our aims for your child:

Securing the foundations for our children on their journey through life
Opportunities to work together with parents and the wider community
Utilising the rural outdoor learning environment
Nurturing our children, inspiring them to be confident, respectful and resilient
Developing life skills, values, teamwork and a love for learning.

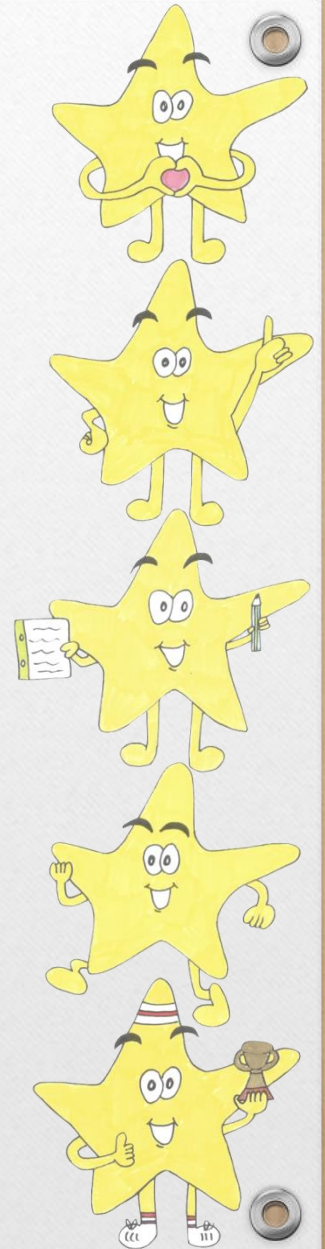
Our Sound Superstars

- ▶ Be Resilient 
- ▶ Be Curious 
- ▶ Be Independent 
- ▶ Be Caring 
- ▶ Be a Team Player 

Positive Discipline

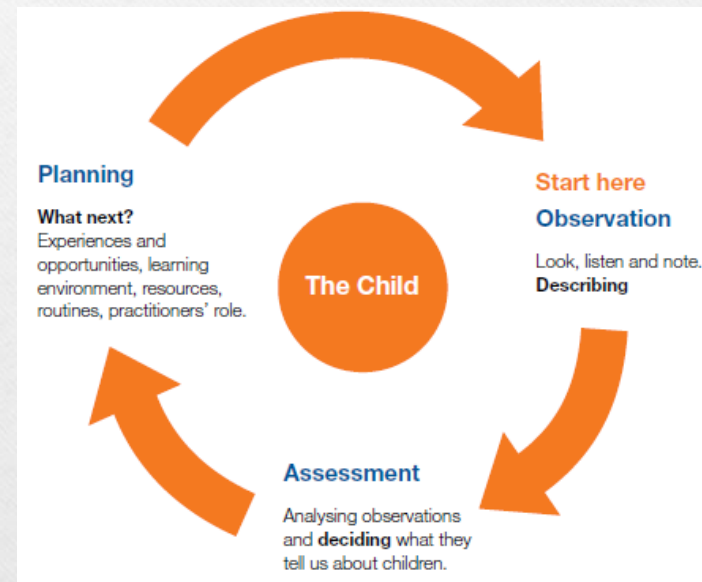
- ▶ Lots of praise for good work and behaviour.
- ▶ Team Points (colour teams)
- ▶ Stars on Stage Assembly Certificates
- ▶ Head Teacher Awards

Sanctions displayed clearly for when necessary. Made and agreed by the class/school.



What is the Early Years Foundation Stage?

Search for 'What to expect, when?' to access document.



Foundation years website also helpful.

The Early Years Foundation Stage (EYFS) Areas of learning

The Foundation Stage Curriculum (revised 2012)

There are **3 Prime Areas**

1. Personal, Social and Emotional Development
2. Communication and Language
3. Physical Development

Then there are **4 Specific Areas**

4. Literacy;
5. Mathematics;
6. Understanding the World;
7. Expressive Arts and Design

Fruit and water

Children in Reception and Key Stage One (Years one and two) are provided with a piece of fruit each day. Each child will also have an individual water bottle to access water throughout the day.

You do not need to bring a water bottle to school this year as your child has their own.

At Sound we promote healthy living, through exercise and diet.

P.E

- ▶ P.E Kit
- ▶ Black shorts
- ▶ White T Shirt
- ▶ Pumps
- ▶ Dark Tracksuit (woolly hats are useful in the winter months!)
- ▶ Trainers
- ▶ **Please put your child's name in every item!**

Please remove all jewellery
before coming to school on these days.

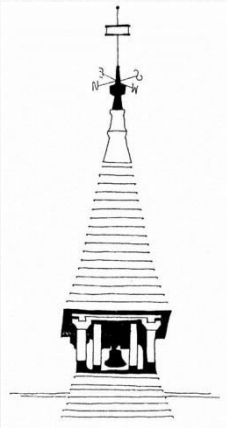
Home and school links

▶ Friday

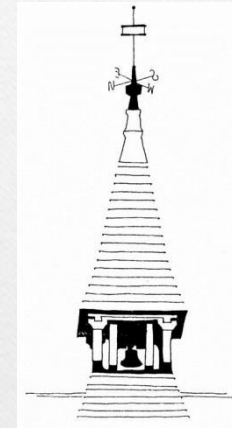
- ▶ Weekly learning letters based on what children have been learning that week. Contained in the letters are things which you can do at home to reinforce this learning.
- ▶ We have a 'Special Moments' book which is predominantly use for you to put your child's home learning into! We will add the weekly letters into this book. You may wish to add in learning to extend on the learning in school.
- ▶ Tricky words, high frequency words and new sounds also regularly sent home for children to practise.
- ▶ Maths and topic challenges will also be sent home later in the academic year.

Reading EVERY day – 10 minutes

Friends of Sound PTFA



At Sound and District we have a very supportive PTFA who help to raise funds for the school, organise exciting events and experiences for the children and help to further develop a strong parent – school relationship.



Shop online?

Click. Shop. Give for free with



**The Giving
Machine™**

John Lewis amazon ebay Sainsbury's ToysRUs

Find us on 

<https://www.facebook.com/soundpta/>

WEB: <http://www.soundpta.com/>

Collecting children

- Please let us know if someone different from usual is collecting your child. You can either ring the school office or speak to the member of staff in the morning to pass on the message.
- Please also let us know if someone on a regular basis will be collecting your child (e.g. Grandparents on a Tuesday).
- If someone comes to collect your child and we do not know who they are, we will not be able to send your child with them until this has been checked with you.

Our doors are always open.

- ▶ Come and see us or use the planners to write and tell us about anything you are concerned about.
- ▶ Tell us **before** it becomes a bigger issue.
- ▶ Tell us the good things as well!
- ▶ **Together** we can support your child on their exciting journey.

▶ Booklet information