



Sound and District Primary School



Meet the Teacher
Welcome to Year One!
Mrs Styles and Mrs Huntbach

Our aims for your child:

Securing the foundations for our children on their journey through life
Opportunities to work together with parents and the wider community
Utilising the rural outdoor learning environment
Nurturing our children, inspiring them to be confident, respectful and resilient
Developing life skills, values, teamwork and a love for learning.

Our Sound Superstars

► Be Resilient



► Be Curious



► Be Independent



► Be Caring



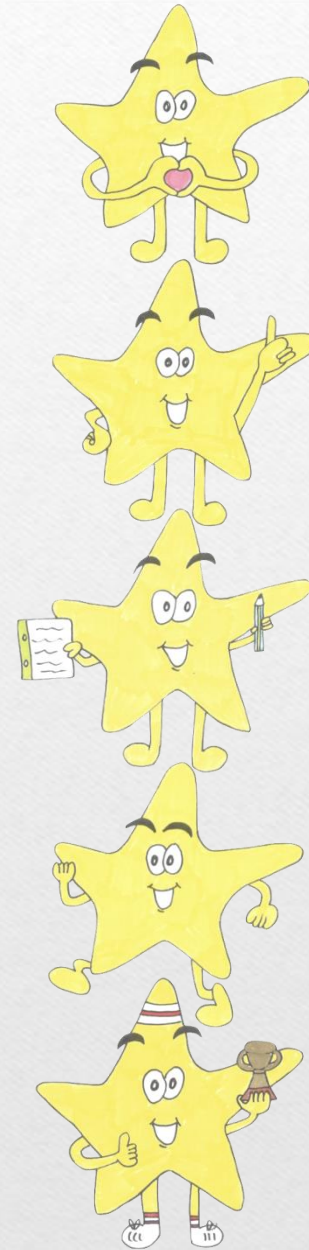
► Be a Team Player



Positive Discipline

- ▶ Lots of praise for good work and behaviour
- ▶ Team Points (colour teams)
- ▶ Assembly Certificates
- ▶ Head Teacher Awards

Sanctions displayed clearly for when necessary.
Made and agreed by the class/school.



Transition from Reception to Year One



Transition to Year One
A booklet for parents



Sound and District
Primary School

2021/22

Please see the transition books for more information about the changing nature of learning from Early Years to Year One.

These also can be found on the class website page.

The curriculum in Year One

Year one is the first year of the National Curriculum.
Reception is part of the Early Years Foundation Stage.

I will send out end of year attainment information so you know what skills and knowledge is expected at the end of the year for Year One.

Our classroom!



Here, the tables are grouped so everyone in the class can have a seat at a desk and can take part in whole class and group activities.

Sometimes we can work in a carousel so the children rotate between a range of activities. Some of these with an adult and others will be independent. There will be a mix of play based and recorded activities.

To support with the transition as children move from Early Years into Year One, our classroom has been designed to allow for a range of learning activities to take place.

The tables are set up to allow for whole class and group learning activities but there is still a large area where continuous provision and play based activities can occur.



This part of the classroom has play based provision activities for children to independently access. We try and plan them to be open ended for children to play and learn in a range of ways.

Here are where some of the play based toys are stored and the children can select what they would like to use when they can access the provision.



Our learning overview

Emerald Class – Year One



Our learning plan for the 2021/22 academic year

	Autumn One (8 weeks)	Autumn Two (7 weeks)	Spring One (7 weeks)	Spring Two (5 weeks)	Summer One (6 weeks)	Summer Two (7 weeks)
Our half term learning topics	Marvellous Me	Zoom to the Moon	Weather Experts	Enchanted Garden	Fire, Fire!	Down in the Jungle
	Amazing Autumn (Seasonal week)	Winter Wonderland (Seasonal week)		Stunning Spring (Seasonal week)	Jubilee Week (Seasonal week)	Splendid Summer (Seasonal week)
						

More information can be found on our class page.

Please also remember to view each half term's learning overview sheet sent home at the start of each topic for more information!

Timetable

	Monday	Tuesday	Wednesday	Thursday	Friday
8.45am – 9.10am	Early morning routines Handwriting/reading Register				
9.10am – 9.35am	Phonics	Phonics	Phonics	Phonics	Phonics
9.35am – 10.30am	English	English	English	English	English
10.30am – 10.45am	Break time				
10.45am – 12pm	Maths	Maths	Maths	Maths	Maths
12pm – 1pm	Lunch				
1pm – 2pm	Science	PE	Art/DT	PE	History/Geography
2pm – 3pm	PSHE/Global	Music	Computing	RE	Reading activities
3pm – 3.15pm	Class reading	Class reading	Class reading	Class reading	Certificate assembly

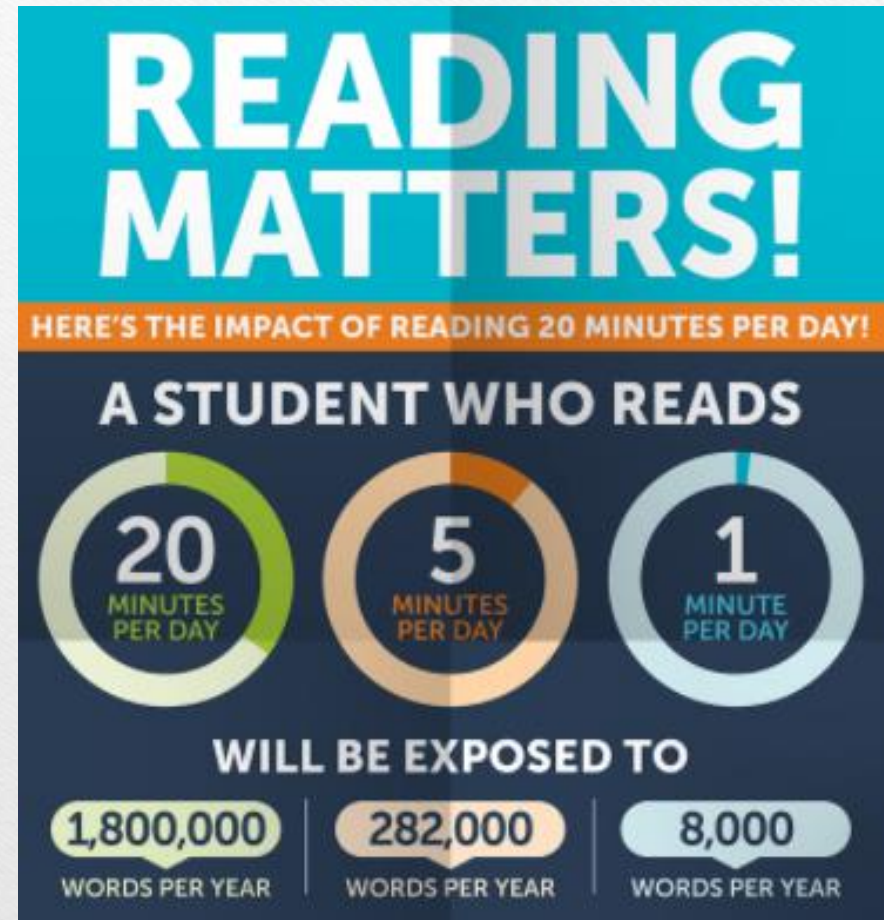
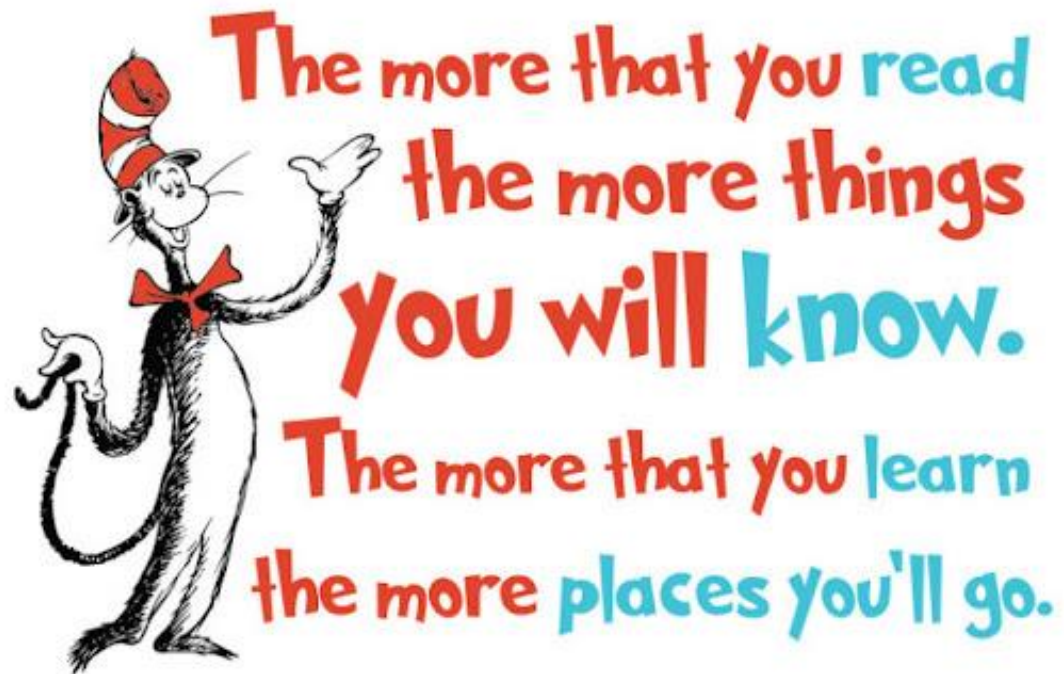
This timetable may change over the school year.

Mrs Huntbach is our wonderful teaching assistant. She will work with our class where the subjects are highlighted in blue.

Mrs Huntbach is our main teacher on a Thursday afternoon. She will be sending the children home each Thursday.

Please read regularly
with your child,
ideally daily!

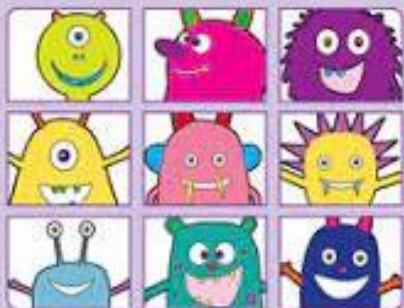
Reading



Key stage 1

Phonics screening check

Pupils' materials



Phonics Screening Check

In Year One, children will take a phonics check which is known as the 'Phonics Screening Check'.

It is a national check that takes place in June and it is designed to see how well your child is applying their phonics knowledge. Please note the check does not check wider reading skills such as fluency or comprehension.

The check contains 40 words which your child will read to Mrs Styles. 20 of the words will be real words and the other half are pseudo words (which the children know as being 'alien words'). These pseudo words are to ensure children are able to decode and read the words using their phonics knowledge.

The children are used to reading with adults in school and these 'alien word' activities are part of our everyday phonics activities. The children are well used to reading them and will not be aware they are taking the phonics screening check; to the children it will be part of their usual phonics learning activities.

We will inform you on how your child has done on the check. I will send more information about the check later in the year.

Practice sheet: Real words

in

at

beg

sum

Practice sheet: Pseudo words

ot



vap



osk



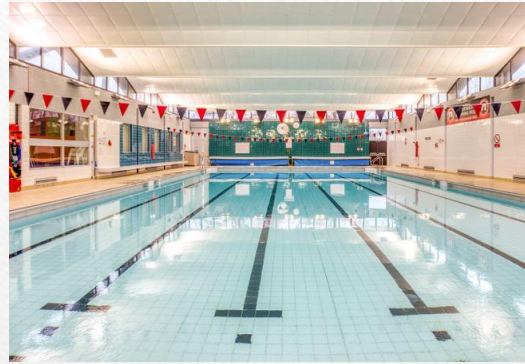
ect



Enhancements and activities



Team days



Swimming lessons (Summer)



Easter Bonnet parade



Standon Bowers – residential visit



Christmas performance

Plus many more!

Communication

Please get in touch if you have any questions or queries

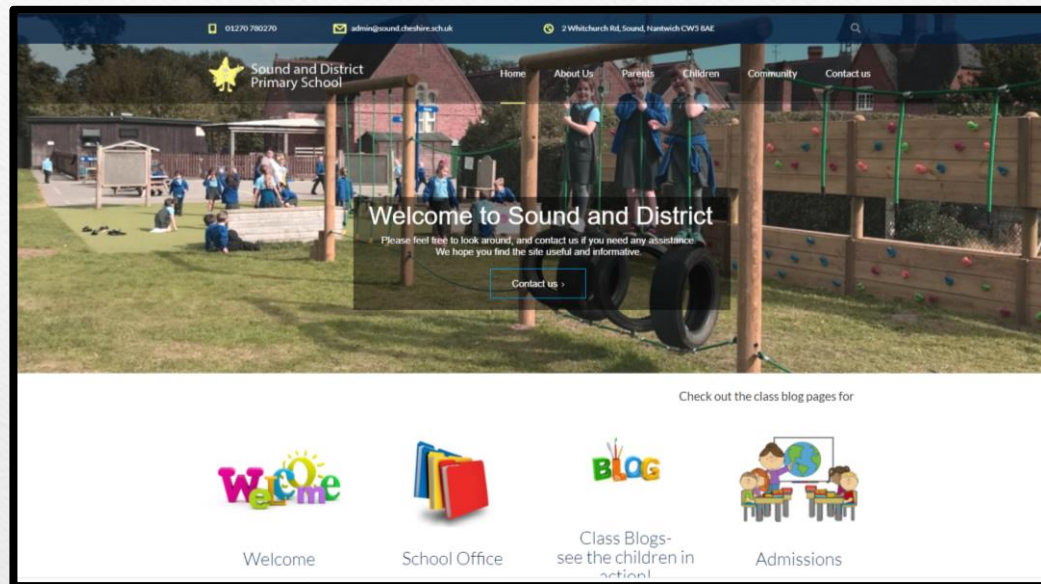
<https://soundprimary.co.uk/>



Emerald Blog

Our aim is to ensure that the children experience a smooth transition from Foundation Stage to Key Stage One. The Year One curriculum builds upon and extends the experiences that the children have had in Reception.

[Visit](#)



We aim to keep you well informed about what your child is learning.

Please regularly check the website and class blog for learning updates.

Each half term, I will send out a learning letter with a brief overview about what is being taught in each subject area. I will also send out ideas for activities you can do to further enhance the topic at home.

P.E

PE kit can be worn on PE days.
This term, our PE days are on a **Tuesday** and **Thursday**.

I will keep you informed if PE days change throughout the year.

P.E Kit

- ▶ Dark shorts or trousers
- ▶ White T Shirt
- ▶ Sport hoodie or school jumper
- ▶ Trainers (Velcro unless laces can be tied without adult support)

Please remove all jewellery
before coming to school on these days.

Your
child
may
have 1
keyring



Class notices

Inside the book bag each day, please bring:

- Reading book (which the children will change when they have read)
- Reading record
- High Frequency word/sound books (sent home soon)
- Also please ensure children bring their own water bottle each day. If possible, please not in book bags as they may spill!

The children take their reading record out of their book bag each day to be checked. Please ensure any important messages or letters are placed within the reading record so we will see them. Book bags are stored outside of the classroom and we will only check these weekly. Many thanks!



Emerald Bear



Meet Emerald Bear!

Each week a child will be randomly chosen to be our 'Emerald of the Week'. On a Friday, that child will get to take Emerald Bear home.

Please write in the diary to share the adventures he got up to when he stayed over the weekend your child is Emerald of the Week! You can add photographs, drawings or something to share the adventures!

We will share the diary on a Monday morning so please make sure the diary and bear is returned on a Monday!

Meet Padme

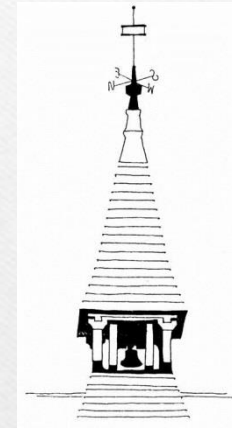
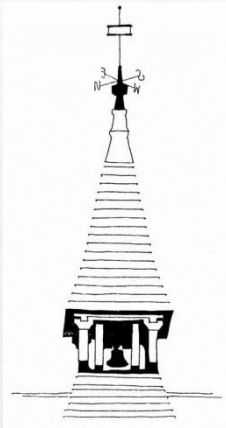
**Emerald class
love Padme!**



Friends of Sound PTFA

At Sound and District we have a very supportive PTFA who help to raise funds for the school, organise exciting events and experiences for the children and help to further develop a strong parent – school relationship.

If you would like to join 'The Friends of Sound' and work closely with the school, please tune in to our first meeting on **Tuesday 7th September @ 6:30pm** or get in touch with the school office to register your interest. Many thanks!



Shop online?

Click. Shop. Give for free with



**The Giving
Machine™**

John Lewis amazon ebay Sainsbury's ToysRUs

Find us on 

<https://www.facebook.com/soundpta/>

WEB: <http://www.soundpta.com/>

We Aim....

...to develop effective relationships between the staff, parents and others associated with the school
...to engage in activities or provide facilities or equipment to support the school and advance the education of our children



We Need.....**your help** now

...to represent the parents in your class
...come to a meeting and help decide what to spend the next £1 on, or how to raise that next £1
...organise and help run a stall, or an event or to join one of our working parties

Reading books



Classroom furniture

Friends of Sound PTFA

Class trip funding



Coaches

Sports day ice lollies



We are here if you need us!

- ▶ Please get in touch if you have any queries or questions.
- ▶ Tell us **before** it becomes a bigger issue.
- ▶ Tell us the good things as well! The children love to share their successes and we love to hear it!
- ▶ **Together** we can support your child on their exciting journey.

Thank you for coming!
Do you have any questions?

