



## **Sound and District Primary School**

Whitchurch Road, Sound, Nr. Nantwich, Cheshire, CW5 8AE

Tel: 01270 780270 Fax: 01270 780020

W: [www.soundprimary.co.uk](http://www.soundprimary.co.uk) E: [admin@sound.cheshire.sch.uk](mailto:admin@sound.cheshire.sch.uk)

Headteacher: Mrs Laura Minshall Thomas (BEd Hons)

---

*Tuesday 5<sup>th</sup> September, 2023*

### *Welcome Back*

*A very warm welcome back to Sound and District from all the staff - I hope you enjoyed a lovely summer with your children. Another exciting and inspiring school year lies ahead.*

*It has been wonderful to see the children come into their new classrooms and start the school year so positively. Thank you for ensuring that they look smart in their uniforms. I wish an extra special welcome to our new families and children who have joined us in Reception. We are sure you will be very happy at Sound and will quickly feel part of our school family.*

*Ahead of the new term, please see below some important updates and information.*

#### **Staffing**

*A huge welcome to Mrs Billingham, who will be the class teacher in Diamond class this year.*

#### **Attendance**

*At Sound and District School, we believe that school success goes hand in hand with good attendance. It is crucial that children attend school so that children learn and understand the importance of going to school on time and every day. If your child is unwell, please ensure that you contact the school office on the same day to let them know.*

---





### **Sound and District Primary School**

Whitchurch Road, Sound, Nr. Nantwich, Cheshire, CW5 8AE

Tel: 01270 780270 Fax: 01270 780020

W: [www.soundprimary.co.uk](http://www.soundprimary.co.uk) E: [admin@sound.cheshire.sch.uk](mailto:admin@sound.cheshire.sch.uk)

Headteacher: Mrs Laura Minshall Thomas (BEd Hons)

---

Throughout the year, the school will be encouraging good attendance through the newsletter, website and Facebook page. Please take a look at our school website page for more information.

<https://soundprimary.co.uk/about-us/key-information/attendance/>

This year, we will work even more closely with you to ensure your child's attendance is at least 96%. If there are any concerns, the school will offer any support in line with our school policy.

### **School Uniform (including PE Kits)**

It is very important that children come in the correct school uniform. The children looked very smart today and this needs to continue throughout the year.

All children in school will come in their school PE kit on the days they have PE. The PE uniform is black shorts/leggings, white t-shirt (plain or with logo) and school hoodie or school jumper/cardigan. Please see below the PE days for your child's class. Information on our school uniform can be found on our school website page.

<https://soundprimary.co.uk/parents/school-uniform/>

### **PE Days**

Day	Class
Monday	Ruby Opal Diamond
Tuesday	Onyx





### Sound and District Primary School

Whitchurch Road, Sound, Nr. Nantwich, Cheshire, CW5 8AE

Tel: 01270 780270 Fax: 01270 780020

W: [www.soundprimary.co.uk](http://www.soundprimary.co.uk) E: [admin@sound.cheshire.sch.uk](mailto:admin@sound.cheshire.sch.uk)

Headteacher: Mrs Laura Minshall Thomas (BEd Hons)

	Topaz
Wednesday	Opal Emerald
Thursday	Onyx Topaz
Friday	Emerald Ruby

*Due to swimming and Gymnastics these are subject to change. Your class teacher will let you know if this is the case.*

*Also, please can your child bring in a spare pair of trainers/wellies for the school field especially when the weather changes. They will not be allowed on the field unless they have their 'playtime footwear'.*

### Mandatory Electronic Forms

*This year, we sent an online link for you to complete the data sheet forms that are completed every year and the media consent. If you have still not completed both forms can you do this as a matter of urgency.*

*See links below:-*

Online form for Contact details	<a href="https://forms.office.com/Pages/ResponsePage.aspx?id=7ec9T33mykSylglTnDm93rjtDwvLzhOiajWMiwanQZUQjIXRjI3RjFUSUwONEdNQ0dMTIUxWk5BQ4u">https://forms.office.com/Pages/ResponsePage.aspx?id=7ec9T33mykSylglTnDm93rjtDwvLzhOiajWMiwanQZUQjIXRjI3RjFUSUwONEdNQ0dMTIUxWk5BQ4u</a> 
Online Media Consent form	<a href="https://forms.office.com/Pages/ResponsePage.aspx?id=7ec9T33mykSylglTnDm93rjtDwvLzhOiajWMiwanQZUQjIXRjI3RjFUSUwONEdNQ0dMTIUxWk5BQ4u">https://forms.office.com/Pages/ResponsePage.aspx?id=7ec9T33mykSylglTnDm93rjtDwvLzhOiajWMiwanQZUQjIXRjI3RjFUSUwONEdNQ0dMTIUxWk5BQ4u</a> 





### Sound and District Primary School

Whitchurch Road, Sound, Nr. Nantwich, Cheshire, CW5 8AE

Tel: 01270 780270 Fax: 01270 780020

W: [www.soundprimary.co.uk](http://www.soundprimary.co.uk) E: [admin@sound.cheshire.sch.uk](mailto:admin@sound.cheshire.sch.uk)

Headteacher: Mrs Laura Minshall Thomas (BEd Hons)

---

*The C forms will still be sent to you in paper form for upcoming residential and visits.*

### *After School Clubs*

*The school sent out an online form (see below) to sign up to after school clubs in July. These are organised in partnership with Outdoor Fun. Please note: clubs will start Monday 11<sup>th</sup> September and if places do come available school will refer to the lists gathered from the online form.*

Day	Clubs	Clubs
Monday	KS1 Table Top Games Miss Hembury-Hayward <b>(FULL)</b>	Outdoor Fun Forest School Club
Tuesday	KS2 Quidditch <b>(FULL)</b>	Dodgeball with LSC <b>(FULL)</b>
Wednesday	Outdoor Fun Cookery Club	
Thursday	Year 5&6 Football Club Mrs Minshall-Thomas (SPACES STILL AVAILABLE)	Totally Active Martial Arts Club Jamie Edwards
Friday	KS1 and Reception Football Club with LSC <b>(FULL)</b>	Outdoor Fun Film Night with themed snack

### *Communication*

*If you have any queries regarding your child, please use the children's diaries to communicate with your class teacher. If you require more time or want to arrange a meeting, email [admin@sound.cheshire.sch.uk](mailto:admin@sound.cheshire.sch.uk) and the member of staff will get back to you as soon as they can. Further*

---





### **Sound and District Primary School**

Whitchurch Road, Sound, Nr. Nantwich, Cheshire, CW5 8AE

Tel: 01270 780270 Fax: 01270 780020

W: [www.soundprimary.co.uk](http://www.soundprimary.co.uk) E: [admin@sound.cheshire.sch.uk](mailto:admin@sound.cheshire.sch.uk)

Headteacher: Mrs Laura Minshall Thomas (BEd Hons)

---

information regarding school communication will be shared in the Meet the Teacher sessions.

### **Nut Free School**

Please note that we are a *nut free school* and that anything containing nuts should not be brought in lunch boxes or for snack.

### **Upcoming School Events**

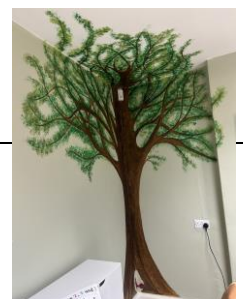
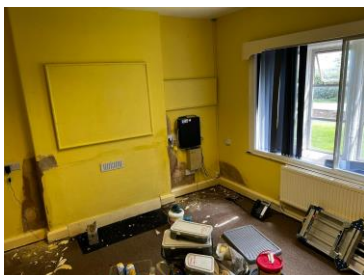
We are really looking forward to inviting you all in for lots of events this year. You will receive over the next few weeks an annual calendar of key dates for your diary, but there is also a regular section on the weekly newsletter letting you know what is coming up.

### **PTA (Friends of Sound)**

The school are incredibly lucky to have a very supportive PTA who work hard to raise funds for the school. They have also set up the Amazon Wishlist page. A huge thank you for all the donations it is very much appreciated. We hope to see you at the Summer Fayre on Saturday 9<sup>th</sup> September 11:00-2:00pm.

### **The Snug**

There have been a few updates over the holidays and a wonderful room created for our children. Please see below a few snapshots of before and after. A special thank you must go to Mrs Noden and her family who have given up their time and talents to create this wonderful space and to Mrs Lomas who also came in to support.





### **Sound and District Primary School**

Whitchurch Road, Sound, Nr. Nantwich, Cheshire, CW5 8AE

Tel: 01270 780270 Fax: 01270 780020

W: [www.soundprimary.co.uk](http://www.soundprimary.co.uk) E: [admin@sound.cheshire.sch.uk](mailto:admin@sound.cheshire.sch.uk)

Headteacher: Mrs Laura Minshall Thomas (BEd Hons)

---



### **Our Revamped EYFS**

*There has also been a lot of work carried out on our Early Years Outdoor Area over the holidays. A huge thank you to Mrs Ashmore for coordinating the Barclays Volunteer Team who came in to paint the outdoor space.*



*Finally, the Sound Team are very much looking forward to working with you all this year and if you have any queries please do not hesitate to contact the school.*

*Kind regards,*

*Mrs Minshall-Thomas and the Sound Team*

---







**Sound and District Primary School**

Whitchurch Road, Sound, Nr. Nantwich, Cheshire, CW5 8AE

Tel: 01270 780270 Fax: 01270 780020

W: [www.soundprimary.co.uk](http://www.soundprimary.co.uk) E: [admin@sound.cheshire.sch.uk](mailto:admin@sound.cheshire.sch.uk)

Headteacher: Mrs Laura Minshall Thomas (BEd Hons)

---

